

■ Opening and Closing Camera



Opening- gently press where it says “PUSH” and turn it clockwise until the camera is parallel to the guide.

Opened Camera



Closing - gently press where it says “PUSH” and turn it counter-clockwise until the camera is above search button.

Closed Camera

■ Program Installation

Insert the installation CD into your CD-ROM. A setup wizard should start automatically*. Once the wizard starts, follow the instruction to finish the installation

*If the Setup Wizard does not run automatically, find <Setup.exe>file (It is on the CD) and double click to start the Wizard

■ How to Use

1. DIXAU program runs when you click on DIXAU icon on the Desktop



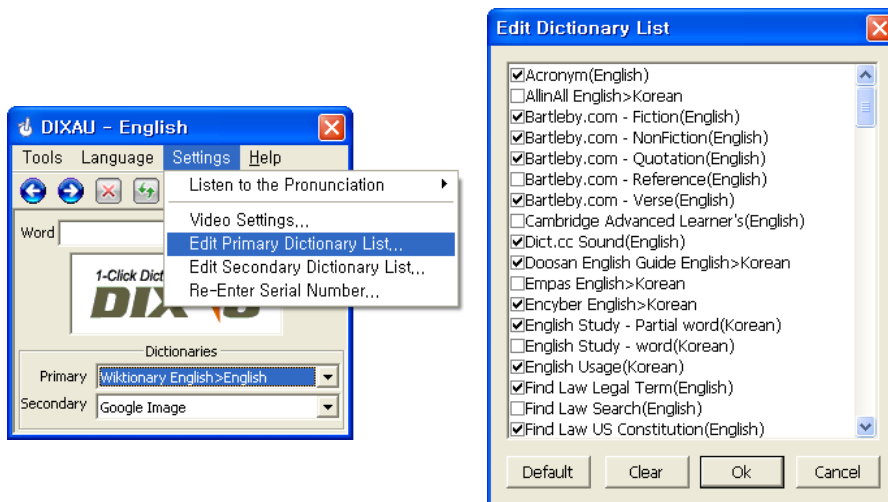
2. Select the language that DIXAU will recognize



3. Select a dictionary. You can also select an extra dictionary using the second list.



4. You can edit the list by opening <Edit Dictionary List>: <Settings> -> <Edit Primary or Secondary Dictionary List...>



5. Place left end of the guide parallel to the word. Click on the Search Button and the results will be shown.



Point & Click

DIXAU shows the results

■ **Extra Features**

● Using Two Dictionaries Simultaneously

1. Select a secondary dictionary using the second list.

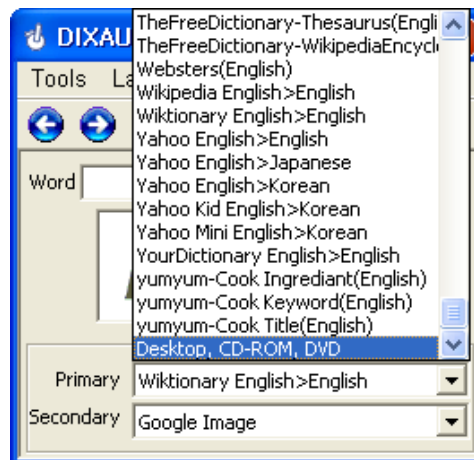
Using this feature, you can see the definition of the word in two different languages.

(English words in 73, Spanish words in 32, French words in 32, and German words in 32 languages)



● Using a Desktop Dictionary

1. Select <Desktop, CD-ROM, DVD> in the dictionary list (It is on the bottom of the list)



- Open your desktop dictionary. Click on the search bar of the desktop dictionary (this will place the cursor on the search bar). Click on DIXAU's capture button. DIXAU will look up the word using the dictionary.



- **Listening to the Pronunciation**

You can hear a native speaker's pronunciation after each look-up.

Go to <Settings> → <Listen to the Pronunciation> → select how many times you want to hear the pronunciation. Select <none> if you want to disable this function.



- **Show Word List**

<My Word List> saves all the words that you looked up using DIXAU chronologically.

You can open <My Word List> by going to <tools> -> <Show word list>.

The last word that you looked up will appear on top.

If you click on any word on the list, it will look up a definition using selected dictionaries.



- **What can DIXAU recognize?**

- DIXAU only recognizes English, Spanish, French, and German words that are printed in a book or a magazine.
- Cursive or artistic fonts are not recognized.
- Words with 2 or more characters that are printed with font sizes from 7 to 16 are recognized.
- If something is written over the word, it will not be recognized. However, highlighters shouldn't affect the recognition accuracy.
- Texts on a picture or texts on a dark background are not recognized.
- When there is a shadow over the word, the accuracy can suffer.

- **Caution**

- Please adjust your ambient light that there is no direct reflection on the camera.
- Do not press the button with an excessive force.
- Do not connect DIXAU to devices other than Desktop PC's or Laptops.
- Do not twist the camera with an excessive force.
- Please avoid high temperatures, high humidity, and dusts.

- Please visit DIXAU website (www.Dixau.com) for any technical questions or software updates.
- You can also download the original installation program on our website.

The logo for unichal, featuring the word "unichal" in a lowercase, sans-serif font. The letter "i" has a small orange arc above it, resembling a smile or a stylized 'i'. A horizontal line extends from the end of the word to the right.

Made in Korea

153-769 SJ Techno Ville 1104, 6019 Gasan-dong,

Geumcheon-gu, Seoul, Korea

TEL : 82-2-3397-0880 FAX : 82-2-3397-0889

<http://www.dixau.com>